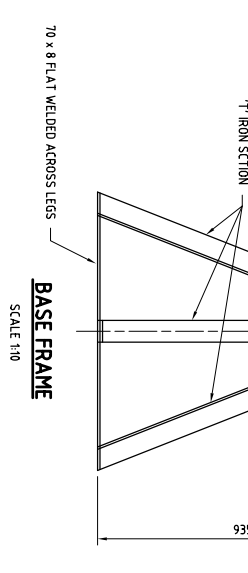


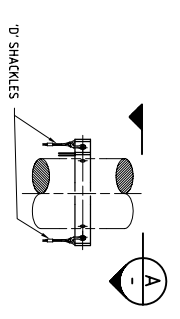
14 m SHAFT
SCALE 1:25

18 m SHAFT
SCALE 1:25

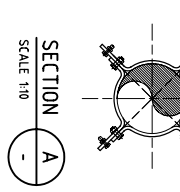
BASE SECTION DETAILS
SIMILAR TO 14 m SHAFT
SCALE 1:25



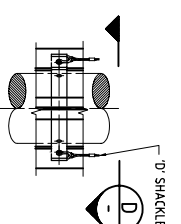
BASE FRAME
SCALE 1:10



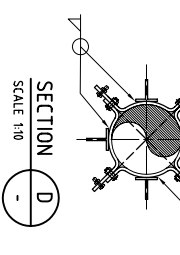
DETAIL 1
BRACKET NO. 7 CONNECTION
SCALE 1:10



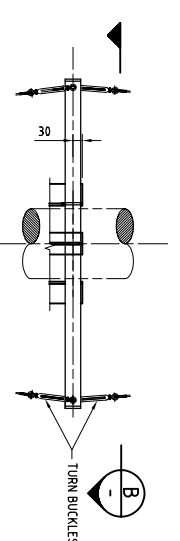
SECTION A
SCALE 1:10



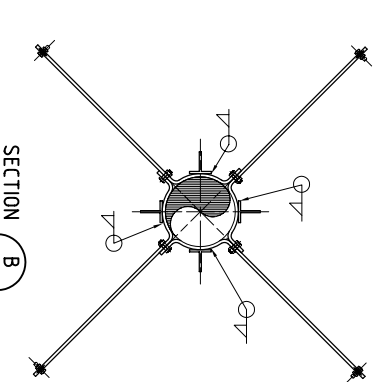
DETAIL 5
BRACKET NO. 2 CONNECTION
SCALE 1:10



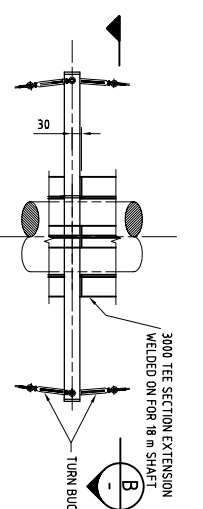
SECTION D
SCALE 1:10



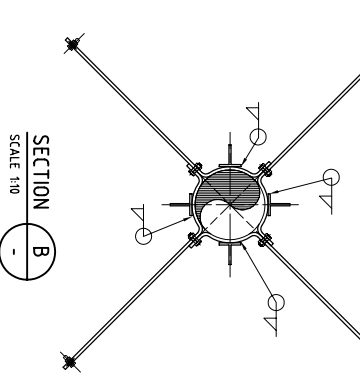
DETAIL 2
BRACKET NO. 3 CONNECTION
14 m SHAFT
SCALE 1:10



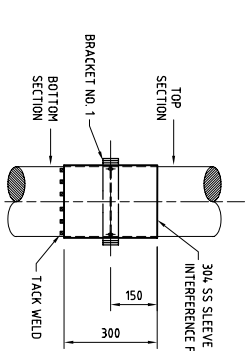
SECTION B
SCALE 1:10



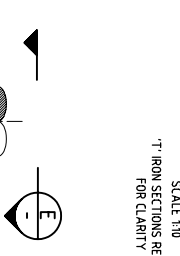
DETAIL 7
BRACKET NO. 3 CONNECTION
18 m SHAFT
SCALE 1:10



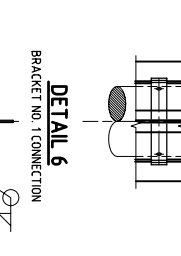
SECTION C
SCALE 1:10



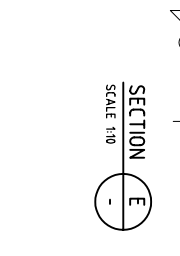
DETAIL 3
SCALE 1:10
'T' IRON SECTIONS REMOVED
FOR CLARITY



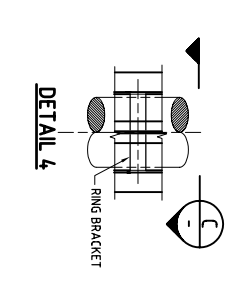
SECTION E
SCALE 1:10



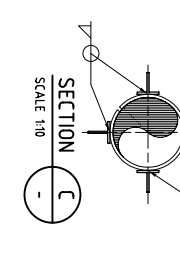
DETAIL 6
BRACKET NO. 1 CONNECTION
SCALE 1:10



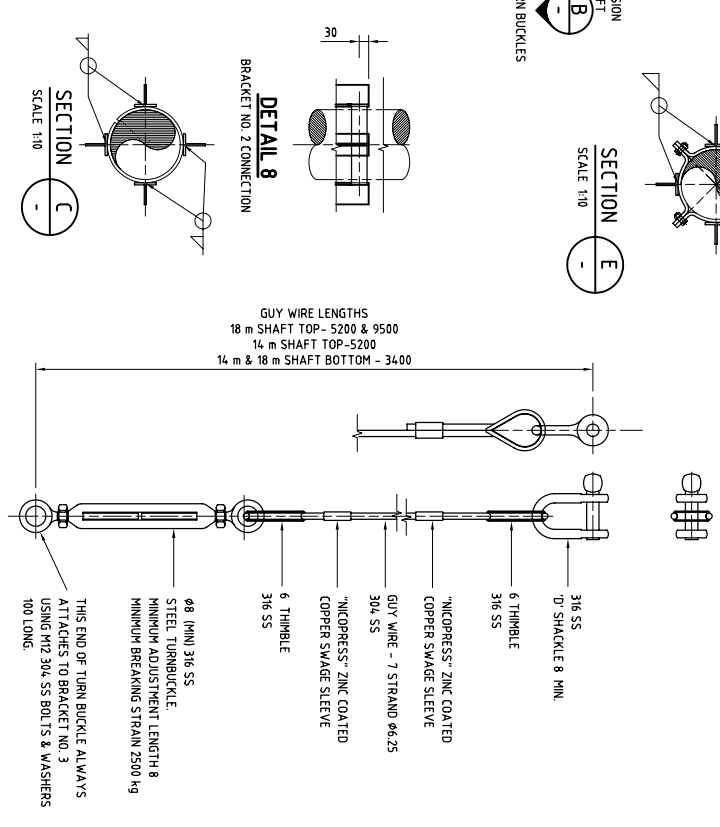
SECTION E
SCALE 1:10



DETAIL 4
SCALE 1:10



SECTION C
SCALE 1:10



GUY WIRE CONNECTION DETAILS

NOTES

1. ALL DIMENSIONS ARE IN MILLIMETERS UNLESS OTHERWISE NOTED
2. VENT TUBES TO BE DN 225 304 (MINIMUM) SS EITHER EXTRUDED OR SPRAL WELDED.
3. VENT SHAFT TUBING, STEEL SUPPORTS, BRACKETS & COWLS TO BE PAINTED AS PER PCS 109
4. CONCRETE TO BE NORMAL CLASS TO AS 1379 AND MINIMUM STRENGTH GRADE 20.
5. VENT SUPPORT LEGS TO BE 70 x 70 x 8 GALVANISED 'T' IRON
6. ALL WELDS TO BE 7 SILICON BRONZE FILL DEPTH TO AS 1167.
7. BASE FRAME TO BE SET IN CONCRETE BASE BLOCK & ALLOWED 5 DAYS TO CURE BEFORE THE SUPPORT LEGS ARE WELDED ON.
8. ALL BOLTS & WASHERS TO BE M12 304 SS 75 LONG UNLESS NOTED OTHERWISE.
9. FOR DETAILS OF BRACKET NOS 1, 2, 3 & RING BRACKET SEE DRG NO EPS 700.04