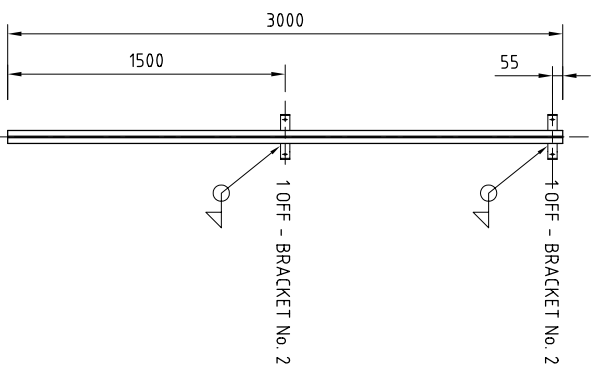


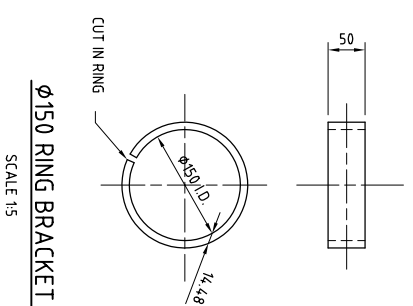
14 m STEEL SUPPORT PIECE

SCALE 1:20

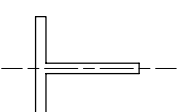


18 m EXTENSION PIECE

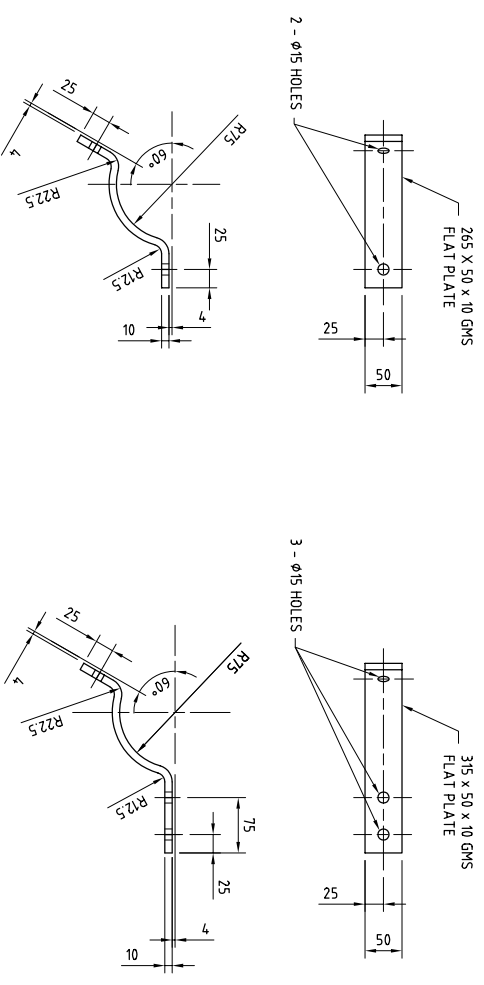
SCALE 1:20



150 RING BRACKET
SCALE 1:5

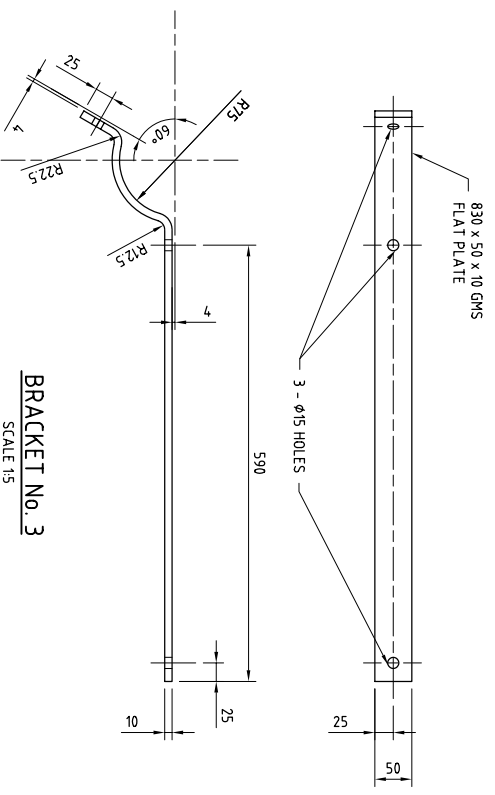


DETAIL 'T' IRON
70 X 70 X 7 TEE SECTION
SCALE 1:20



BRACKET No. 1
SCALE 1:5

BRACKET No. 2
SCALE 1:5



BRACKET No. 3
SCALE 1:5

NOTES

1. ALL DIMENSIONS IN MILLIMETERS UNLESS OTHERWISE NOTED
2. VENT TUBE SUPPORT LEGS TO BE 70 X 70 X 8 GALVANISED "T" IRON
3. STEEL SUPPORTS & BRACKETS TO BE HOT DIPPED GALVANISED AND COATED AS PER PCS309.
4. ALL WELDS TO BE 7 SILICON BRONZE FULL DEPTH TO AS 1167.
5. ALL BOLTS TO BE 304 SS 1/2" UNC X 2 1/2" HEXAGON SET SCREWS AND SS WASHERS OR METRIC EQUIVALENT.