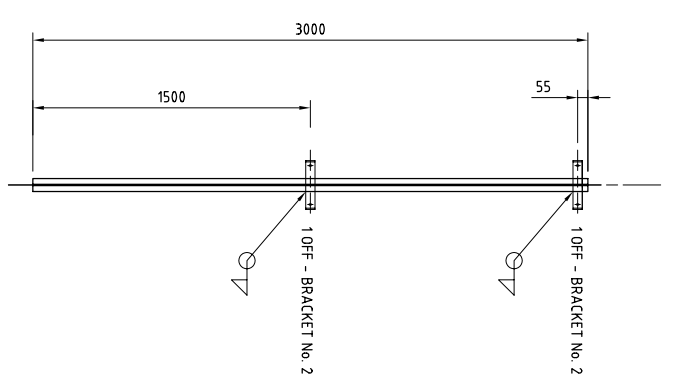


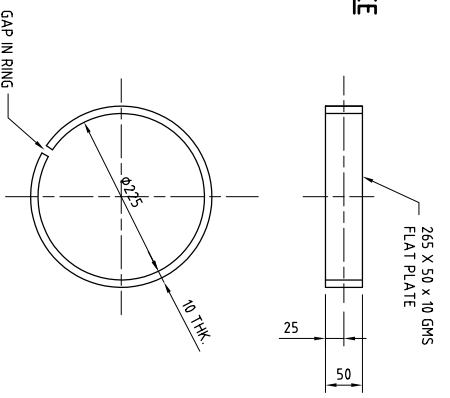
PART No. 1
NO. OFF - 3

PART No. 2
NO. OFF - 1

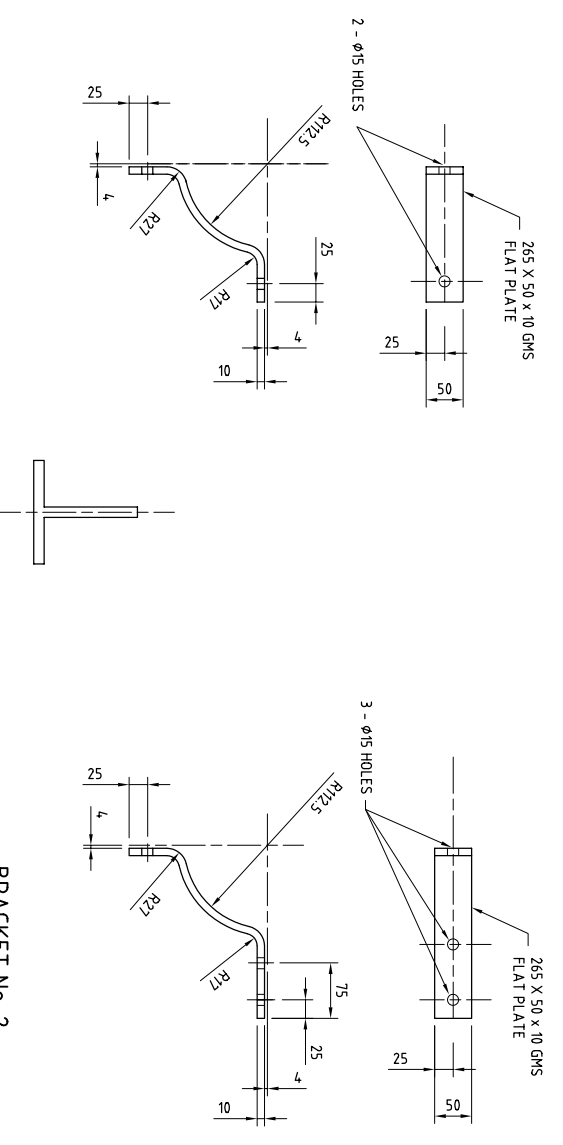
14 m STEEL SUPPORT PIECE
SCALE 1:20



PART No. 3
NO. OFF - 4
18 m EXTENSION PIECE
SCALE 1:20

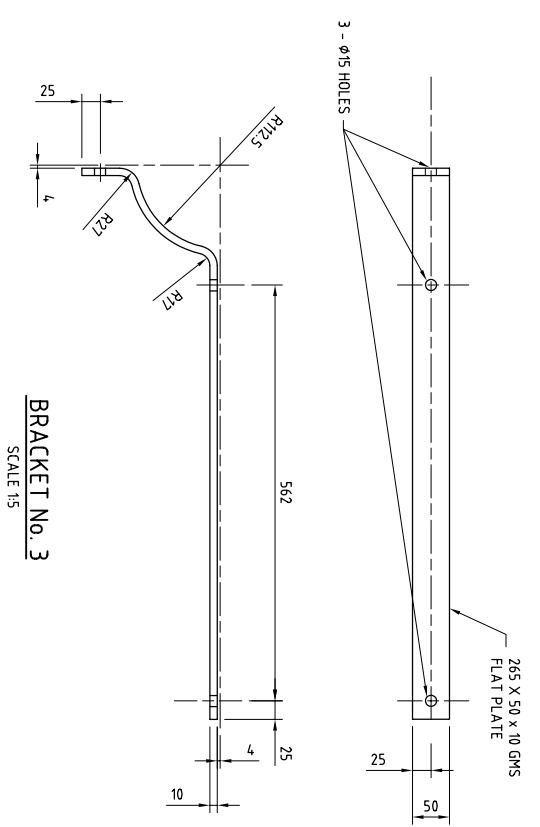


Ø225 RING BRACKET
SCALE 1:5



BRACKET No. 1
SCALE 1:5

BRACKET No. 2
SCALE 1:5



DETAIL 'T' IRON
70 X 70 X 7 TEE SECTION
SCALE 1:5

NOTES

1. ALL DIMENSIONS IN MILLIMETERS UNLESS OTHERWISE NOTED
2. VENT TUBE SUPPORT LEGS TO BE 70 x 70 x 8 GALVANISED "T" IRON.
3. STEEL SUPPORTS & BRACKETS TO BE HOT DIPPED GALVANISED AND COATED AS PER PCS109.
4. ALL WELDS TO BE 7 SILICON BRONZE FULL DEPTH TO AS 1167.
5. ALL BOLTS TO BE 304 SS 1/2" UNC x 2 1/2" HEXAGON SET SCREWS AND SS WASHERS OR METRIC EQUIVALENT.