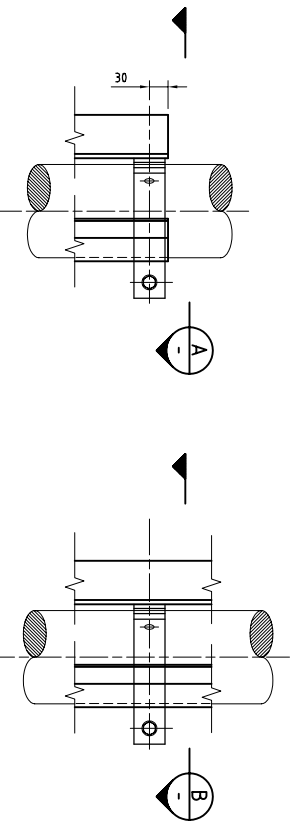
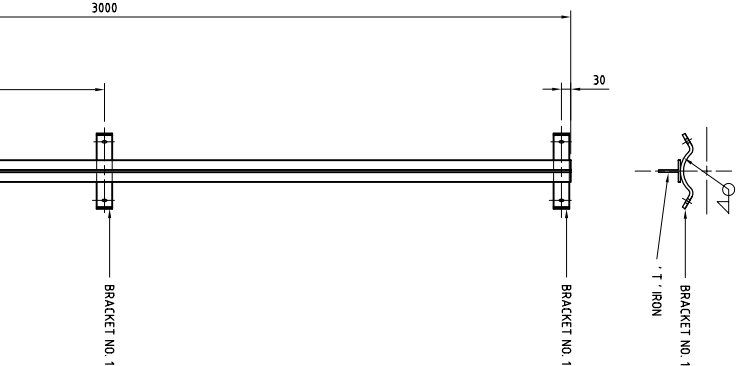
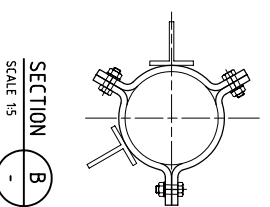
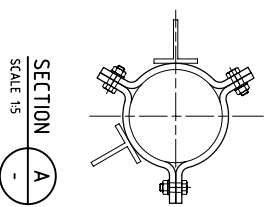


ELEVATION
SCALE 1:20



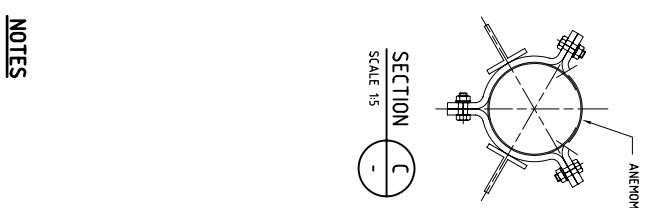
DETAIL 1
SCALE 1:5

DETAIL 2
SCALE 1:5



LEG DETAIL
SCALE 1:5

BASE FRAME
SCALE 1:5



SECTION C
SCALE 1:5

NOTES

1. ALL DIMENSIONS IN MILLIMETERS UNLESS OTHERWISE NOTED
2. VENT TUBES TO BE DN 150 304 (MINIMUM) SS, EITHER EXTRUDED OR SPIRAL WELDED.
3. VENT SHAFT TUBING, STEEL SUPPORTS, BRACKETS & COWLS TO BE COATED AS PER PCS 109.
4. CONCRETE TO BE NORMAL CLASS TO AS 1379 AND MINIMUM STRENGTH GRADE 20.
5. VENT SUPPORT LEGS TO BE 70 x 70 x 8 GALVANISED T-IRON
6. ALL WELDS TO BE 7 SILICON BRONZE FILL DEPTH TO AS 167.
7. BASE FRAME TO BE SET IN THE CONCRETE BASE BLOCK & ALLOWED 5 DAYS TO CURE BEFORE SUPPORT LEGS ARE WELDED ON.
8. ALL BOLTS & WASHERS TO BE M12 304 SS 75 LONG UNLESS NOTED OTHERWISE.
9. THE THIRD T-IRON BASE LEG IS LEFT UNUSED, BUT IT WILL BE USED IF THE VENT IS CHANGED TO A 14" DIA GUYWIRE VENT.